



## Delray

BY STOCK CLASSIC HOMES

The Delray's 3,195-square-foot great room plan includes an island kitchen, study, three bedrooms, three-and-a-half baths, a second floor, and a two-car garage. The spacious loft gives a comfortable, airy feeling to the second floor, providing a quiet escape from daily activity. Large windows in the study provide a view beyond the front porch giving an even more peaceful feeling to the space

## Contact

(941) 200-6437

42850 Crescent Loop, Babcock Ranch, FL 33982

[contact@babcockranch.com](mailto:contact@babcockranch.com)

## Specifications

Base Price \$509,990

3,195 S.F.

3 Bedrooms

3.5 Bathrooms

Lake Timber Neighborhood

Single-Family

Built by Stock Classic Homes

## Home Status

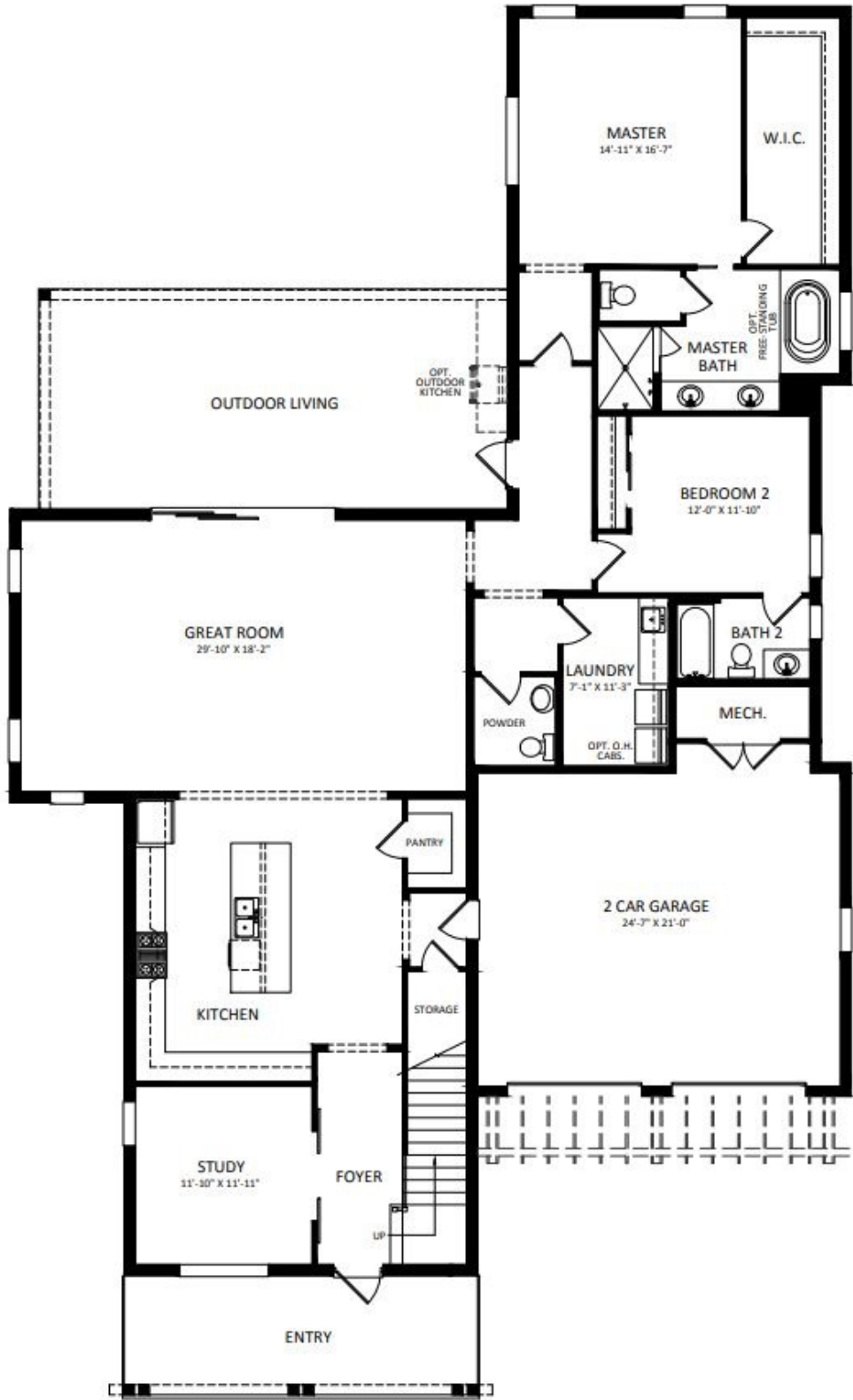
Designer Furnished

Model Leaseback

Home Design



All information is deemed reliable, but is not guaranteed. All prices, dimensions and specifications are subject to change without notice. The master developer reserves the right, in its sole and absolute discretion, to modify plans for the development described or depicted herein at any time without notice. No guarantees or representations whatsoever are made that the features, amenities and facilities, and existing or future views of the project and surrounding areas depicted or otherwise described herein, will be provided, or, if provided, will be of the same type, size, location or nature as depicted or described herein. All rights reserved © 2018 Kitson & Partners and its affiliates.



### Delray Home Design Area Summary

Floor Plan	
Living A/C	3,195 S.F.
Entry	189 S.F.
Garage	568 S.F.
Outdoor Living	460 S.F.
<u>Total A/C</u>	<u>3,195 S.F.</u>
Grand Total	4,601 S.F.



All information is deemed reliable, but is not guaranteed. All prices, dimensions and specifications are subject to change without notice. The master developer reserves the right, in its sole and absolute discretion, to modify plans for the development described or depicted herein at any time without notice. No guarantees or representations whatsoever are made that the features, amenities and facilities, and existing or future views of the project and surrounding areas depicted or otherwise described herein, will be provided, or, if provided, will be of the same type, size, location or nature as depicted or described herein. All rights reserved © 2018 Kitson & Partners and its affiliates.