



# Amelia

BY HOMES BY TOWNE

This cozy 1,860 sq. ft. great room plan features 2 bedrooms plus den. Storage lovers take note of the inviting kitchen with large pantry and the convenient mud room with drop zone area. The neighborly porch and rear lanai allows you to enjoy your home from front to back. The Amelia is one of our 50' home sites.

## Contact

(941) 200-6437

42850 Crescent Loop, Babcock Ranch, FL 33982

[contact@babcockranch.com](mailto:contact@babcockranch.com)

## Specifications

Base Price \$349,900

1,860 S.F.

2 Bedrooms

2 Bathrooms

Lake Timber Neighborhood

Single-Family

Built by Homes By Towne

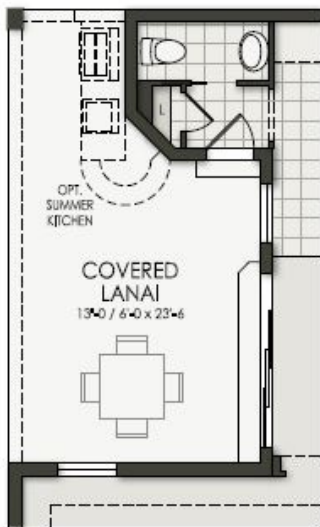
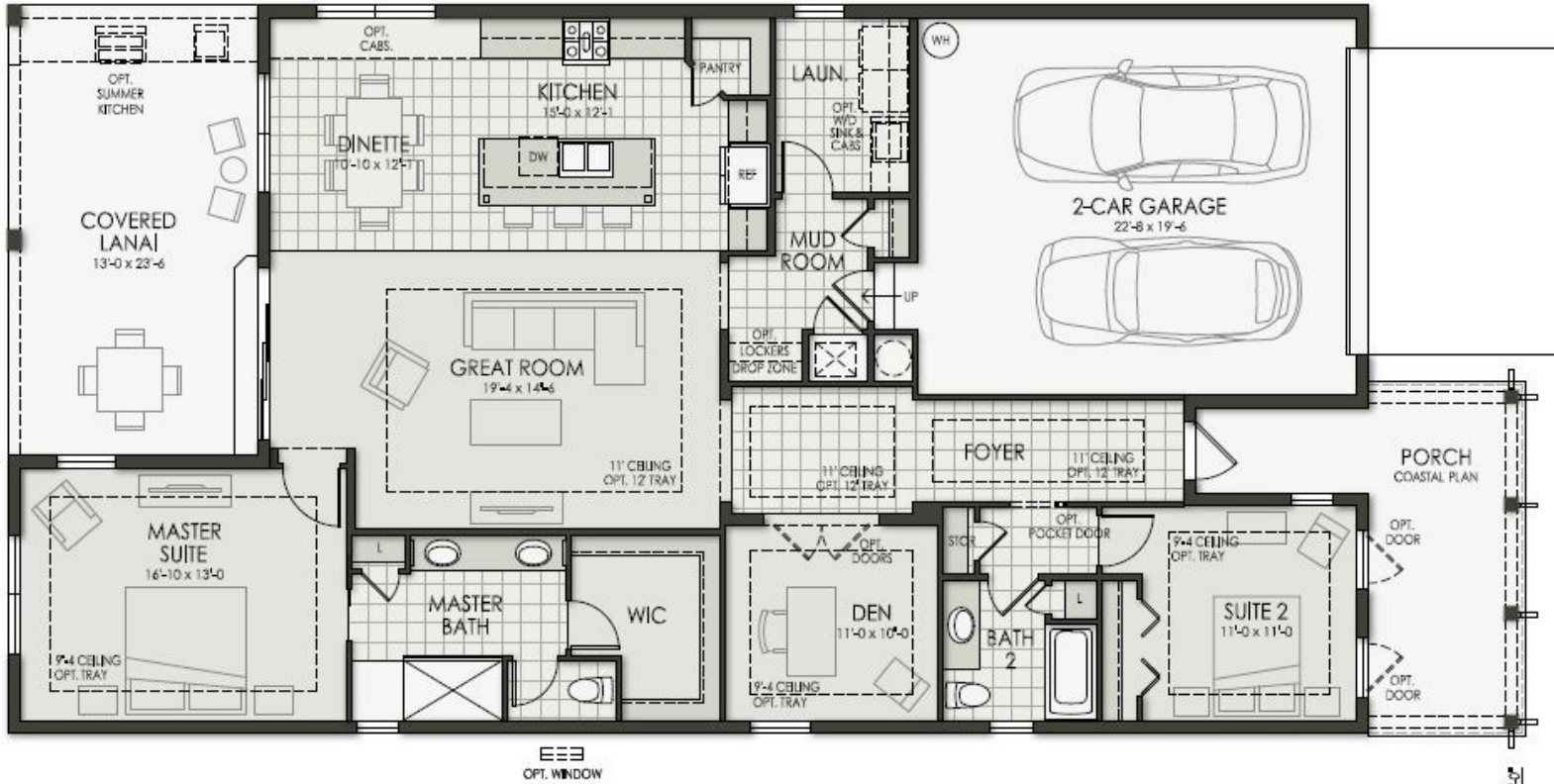
## Home Status

Dream Ready

Home Design



All information is deemed reliable, but is not guaranteed. All prices, dimensions and specifications are subject to change without notice. The master developer reserves the right, in its sole and absolute discretion, to modify plans for the development described or depicted herein at any time without notice. No guarantees or representations whatsoever are made that the features, amenities and facilities, and existing or future views of the project and surrounding areas depicted or otherwise described herein, will be provided, or, if provided, will be of the same type, size, location or nature as depicted or described herein. All rights reserved © 2018 Kitson & Partners and its affiliates.



**POOL BATH OPTION**

POOL BATH 52 S.F.  
LANAI 253 S.F.



**SUITE 3 OPTION**

### Amelia Home Design Area Summary

Floor Plan	
Living A/C	1,860 S.F.
Entry	186 S.F.
Garage	493 S.F.
Outdoor Living	305 S.F.
<b>Total A/C</b>	<b>1,860 S.F.</b>
<b>Grand Total</b>	<b>2,844 S.F.</b>



All information is deemed reliable, but is not guaranteed. All prices, dimensions and specifications are subject to change without notice. The master developer reserves the right, in its sole and absolute discretion, to modify plans for the development described or depicted herein at any time without notice. No guarantees or representations whatsoever are made that the features, amenities and facilities, and existing or future views of the project and surrounding areas depicted or otherwise described herein, will be provided, or, if provided, will be of the same type, size, location or nature as depicted or described herein. All rights reserved © 2018 Kitson & Partners and its affiliates.